

Clinchring Removal Tool

Operating Instructions





1. Ensure the valve recess and face is free of dirt and grit.

2. Please ensure that you are wearing heavy duty leather gloves as sharp edges will be created on the clinchring in this process.



3. Hold the red handle of the clinchring removal tool in one hand and guide the disc and bayonet features into the face of the valve with the other.



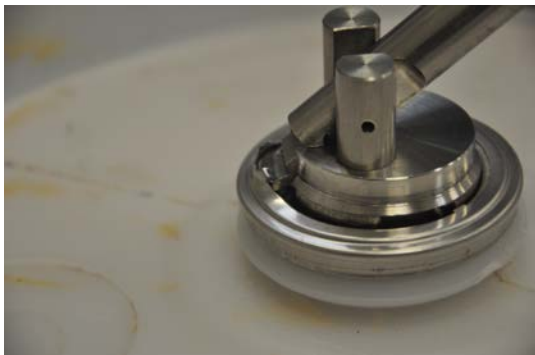
4. Rotate the tool clockwise to engage the bayonet pins and until the chisel tip can access the inner edge of the clinch ring – **DO NOT** rotate the tool so far that the valve is being rotated as this will damage the tool.



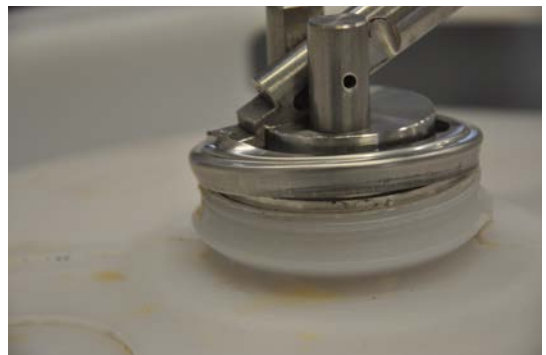
5. Raise the red handle and manoeuvre the chisel tip corner into the position shown between the inner edge of the clinch ring and the top of the valve.



6. Move the red handle down and forward and carefully lever up the inner edge to stretch the clinch ring up from the inner edge towards the outer edge.



7. When the first movement has lifted the edge of the clinch ring release the pressure on the red handle and reposition the tip further into the space that has been made and push the red handle forwards and when the chisel tip is fully inserted gradually press the red handle down to lift the clinch ring further.



8. Repeat step 6 until the clinchring has been stretched as far as possible and releases from the container neck.



9. In some cases it might be necessary to remove the tool from the valve and then re insert it but starting from the next bayonet slot and work on the clinch ring in a different position (120 degrees for a 3 pin and 90 degrees for a 4 pin) this will allow the clinch ring to be released from the container neck.



10. When the clinch ring is removed it will have sharp edges, handle it with care using leather gloves and place it in a scrap bin.

The clinchring removal tool should then be removed.

Please Note:

- This tool is not designed to be used as a valve removal tool.
- **DO NOT** attempt to unscrew the valve using the clinch ring removal tool as the torque required will damage the tools handle pivot point.
- **DO NOT** hammer the end of the red handle to insert the chisel tip as this will damage the tool.
- To remove the valve use the Micro Matic RSV/RPV container Install/Removal tool and a suitable ½" drive socket wrench as pictured below.

